

# CIM50

by CIM Software



Manufacturing software for **sage**

All the tools...

you need to run...

...your business.

# Contents

Cim50	4
Modules	6
Stock Control – Easily control your stock.	7
Bill of Materials – Configure your built items.	10
Works Orders – Manage your production.	14
Planning – Despatch in time.	17
Quotations – Power quotations module.	20
SFDC – Shop floor data capture.	23
Dashboards – Interrogate your data.	27

# Cim50

Cim50 is a modular system that provides you with all the tools you need to manage your business.

---

Whether you are looking for enhanced Stock Control to go beyond the capabilities of Sage 50 Accounts, or are looking for a complete Manufacturing package to control all aspects of your business, Cim50 is a revolutionary new product that gives you the control and confidence you need from your business-critical software.

We have combined our 100+ years' worth of manufacturing industry leading experience and knowledge to produce our own cutting-edge software solution that integrates with Sage 50 Accounts.

When designing our software, we followed several key philosophies to ensure Cim50 is familiar to customers who use Sage 50 Accounts, or have used Sage 50 Manufacturing. We focused on ensuring that Cim50 is easy to use, with a modern user interface, whilst providing powerful functionality and clear, easy to understand reporting.

We have listened to all comments and feedback received from customers and business partners, to produce a solution that will improve data management and processing for all.



integrates with...

**sage** 50cloud

...for enhanced  
functionality.

# Modules

Stock Control



Bill of Materials



Works Orders



Planning



Quotations



SFDC





# Stock Control

Easily control your stock

...with Cim50 Stock Control; combined with the Sage 50 Stock module, track and maintain the items you sell, buy or manufacture.

---

Take advantage of this module, to utilise traceability, quarantine and the ability to amend sales order despatches or purchase order receipts.

## Traceability

Track all serial numbers & batch movements showing a detailed costing breakdown and history.

## Quarantine

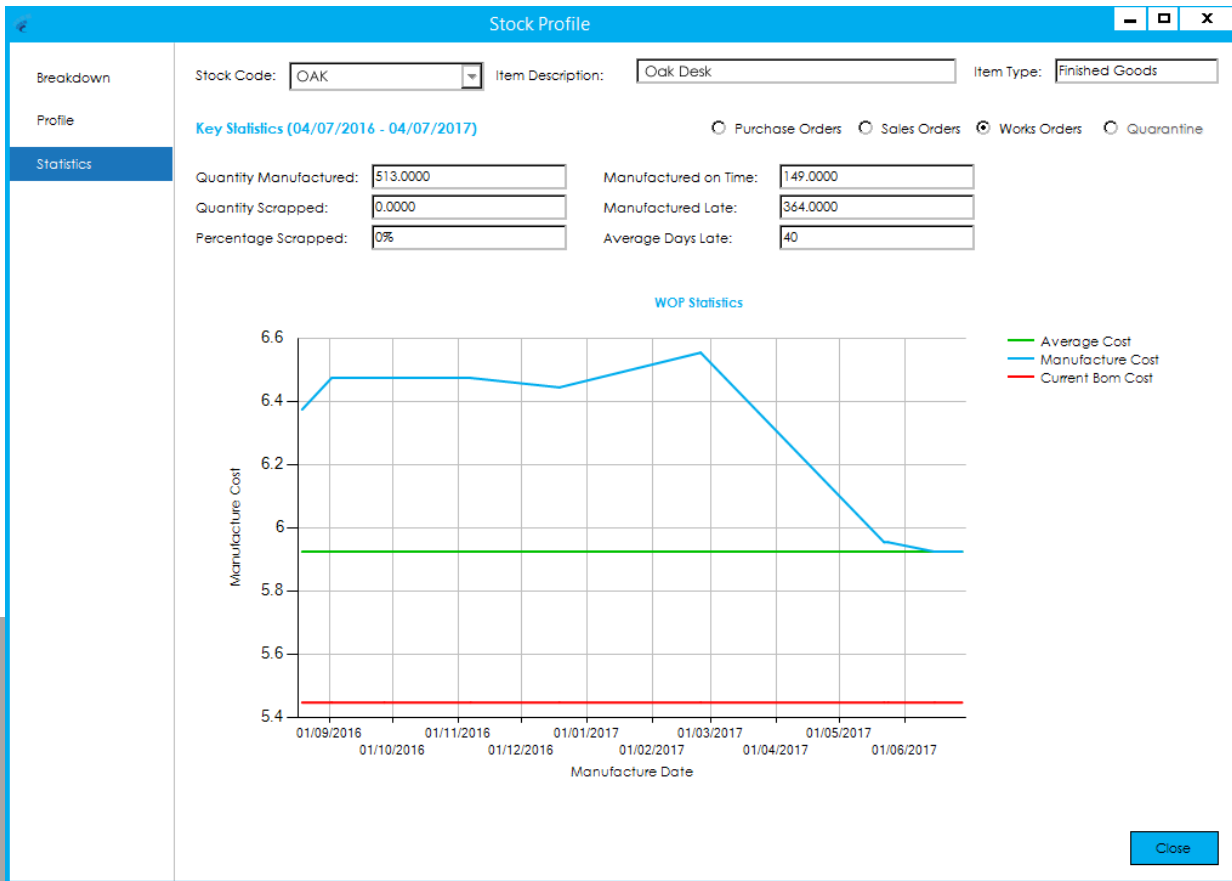
Book items into quarantine when receiving goods, completing a works order or manually transfer at any time.

## Stocktake

Advanced stocktaking for batch and serial numbers, with the facility to halt all stock transactions for items being counted.

## Despatch/Receipt

Despatch or receive goods from within Stock Control with the ability to capture packing information. If you've despatched the wrong item, or received the wrong quantity, simply amend accordingly.



### Key Statistics

Monitor key indicators for your stock, including supplier and despatch performance with cost variances, in one easy to view enquiry.

### Analysis Codes

Up to 20 analysis codes can be setup to suit your business requirements, used by the advanced filtering and search facility throughout Cim50.

**Stock Control Settings**

Stock Settings

Traceability

**Stock Analysis**

Traceable Analysis

Units

**Stock Analysis**

**Important Note:** You have 20 analysis codes available. Once an analysis code has been set, it cannot be changed from within the system. Please contact CIM Software Support should you require assistance.

No.	Analysis Code Name	Type
1	Furniture Range	Text
2	Offer Code	Numeric
3	Offer Expiry	DateTime
4	Signed off	Boolean
5		
6		
7		
8		
9		
10		
11		
12		
13		
14		

Save Cancel

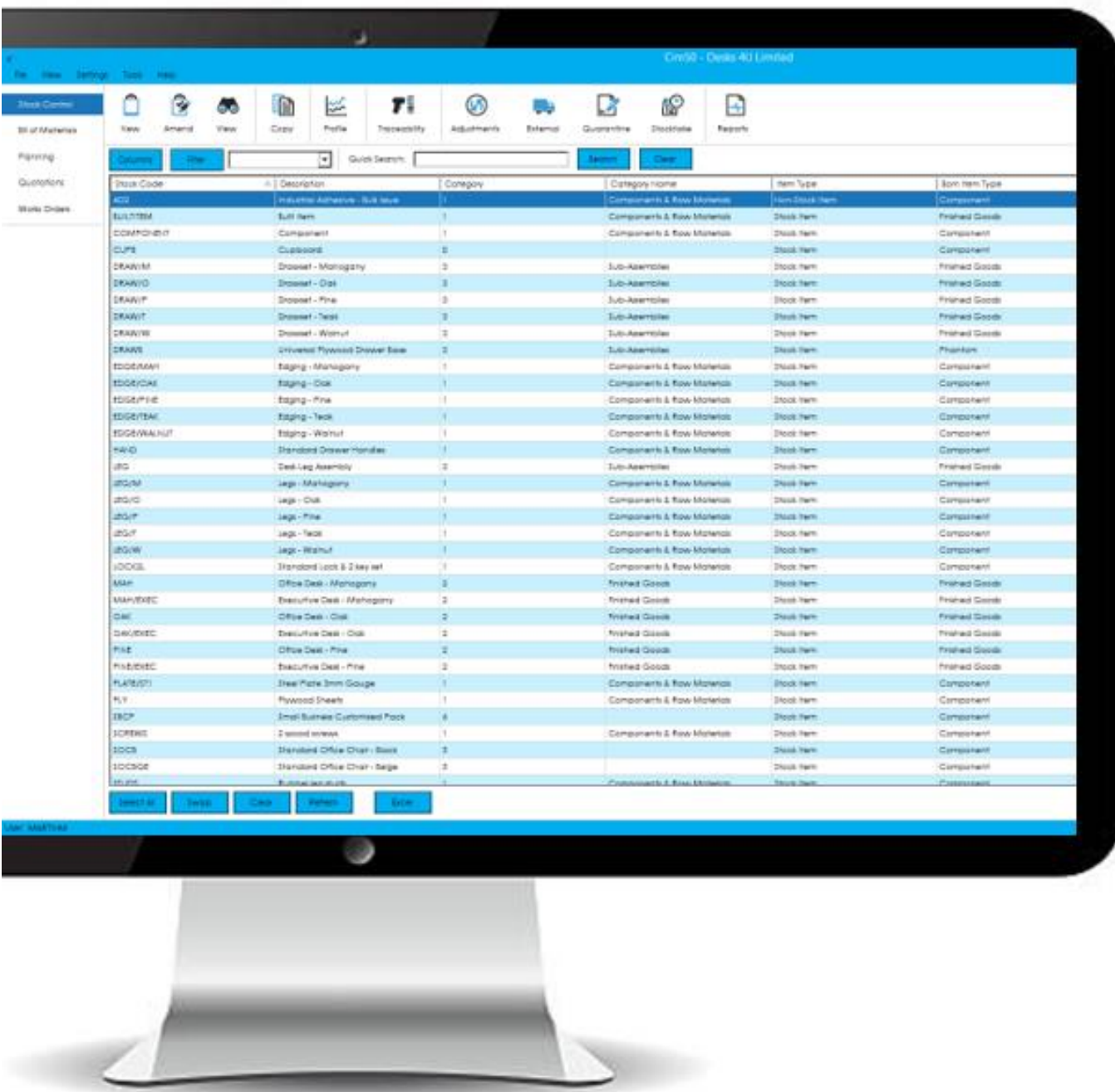


## Audit Log

Check for amendments to stock records within the audit log, tracking any changes made and by whom.

## User Interface

Cim50 Stock Control provides you with current functionality of Sage 50 Accounts, with enhanced features from Cim50, within one easy to use interface.



...one easy to use interface.

# Bill of Materials

Configure your built items

...with Cim50 Bill of Materials. This module offers the flexibility to choose what is right for your business, depending on your manufacturing requirements.

This enhanced module includes multi-level bill of materials, an audit log to track every change made, and an ongoing costing history; capturing material, labour and machine overheads.



Costing History

Ongoing costing history gives you the confidence that your build and purchase costs are accurate, capturing material, labour and machine overheads.



Trial Kitting

Allows you to raise works orders and purchase orders for several jobs, ensuring manufacturing and purchasing costs are most efficient.



Reverse Build

Explode your components back into stock with accurate costs using the reverse build option.



Operation Components

Assign components to relevant operations and print on the appropriate paperwork to ensure components are only allocated when needed.

Amend Bill of Material - DRAW/M

Bom Reference:  Bom Description:

**Components**

Seq.	Stock Code	Description	Quantity	Unit
5.00	DRAW8	Universal Plywood Drawer Base	6.00	Each
10.00	HAND	Standard Drawer Handles	0.60	Each
15.00	TIM8/MAH	Timber - Mahogany Veneer - 6 Metre	1.50	Each
20.00	LOCK2L	Standard Lock & 2 key set	1.00	Each
30.00	AD2	Industrial Adhesive - Bulk Issue	1.00	5 litre
40.00	TUBE/ST1	Steel Tube 25mm Dia	1.00	Metre

Components
  Finished Goods
  Phantom
  Sub-Assy

Additional Component Settings

In Progress:  Scrap Percent:  Manufacturing Instruction:

Fixed Quantity:  Reference:

Bulk Issue:  Operation:



## Operation Times

Operation times in hours, minutes and seconds, easier access to operation and component setup with multiple subcontract suppliers.

Amend Bill of Material - DRAW/M

Bom Reference:  Bom Description:

**Operations**

Seq.	Reference	Description	Type
5.00	CUT	Cut Timber	Standard
15.00	DRILL	Drill holes for handles	Standard
20.00	FIX	Fit standard drawer handles and locks	Standard
23.00	DRAWASS	Drawer Assembly & Finish	Standard
33.00	SUB CON	Sub contract Varnish	Subcontract

Operation Details

Qty Per Run:

Run Time:  h  m  s

Delay Time:  h  m  s



### Analysis Codes

20 analysis codes can be setup to help categorise your bill of materials, used by the advanced filtering and search facility throughout Cim50.



### Audit Log

Ensure your bill of materials are accurate and check for amendments with the audit log, tracking any changes made and by whom.



...control your built items.

simple...

...and effective solution...

designed...

...with you in mind...



# Works Orders

Manage your production

...with Cim50 Works Orders. This module allows you to follow the 'build' on the shop floor, with amendable documentation, detailing the quantities of components required, which operations are needed and when.

---

This enhanced module allows you to raise, progress and track your works orders throughout the entire production process. Providing easy interfaces and enquiry screens to allow you to have confidence that your jobs are being completed on time, on spec, and within budget.

An advanced subcontracting module allows you to control all subcontract processes. Capacity planning allows you to control your in-house resources as needed, and powerful component control allows you to reserve component stock for jobs, including batch or serial numbers.

Amend Works Order - WO0013

Main Details

Links

Memo

Components

Routing

Subcontracting

Costing

Documents

Analysis

Audit Log

Works Order Reference:

**Works Order Details**

Bom Reference:  Status:

Description:

Qty Required:  Unit:

Qty Outstanding:

Qty Scrapped:

Qty Complete:

Revision:

Quality Standard:

Project Number:  Works Number:

Salesperson:  WIP Nominal Code:

**Dates**

Created:

Due Date:

Safety Due Date:

Start Date:

End Date:

Last Completed:

Material Overhead:  %

Labour Overhead:  %

Machine Overhead:  %

**Instructions**

Manufacturing Instructions:

**Product Image**

**Planning**

Include in MRP Demand:

Include in MRP Replenishment:

Exclude from Stock Profile:

### Improve cash flow

Assign components to specific operations, which in turn, will have their own due dates. Only buy stock when you need it, easing warehouse space.

### Manage your resources

Record labour bookings against your jobs, either by employee or works order and check the available capacities of your labour and machine resources.

### Sub Contract

Raise purchase orders, despatch the goods to your sub contract supplier and receive them back within one easy to use screen.

### Reduce costs and delivery times

Capture every amendment to your works order with the audit log, ensuring your data is accurate and your costs are correct.

### Archive

Keep a full history of all your works orders, but keep your 'live' orders to a minimum.

### Linking

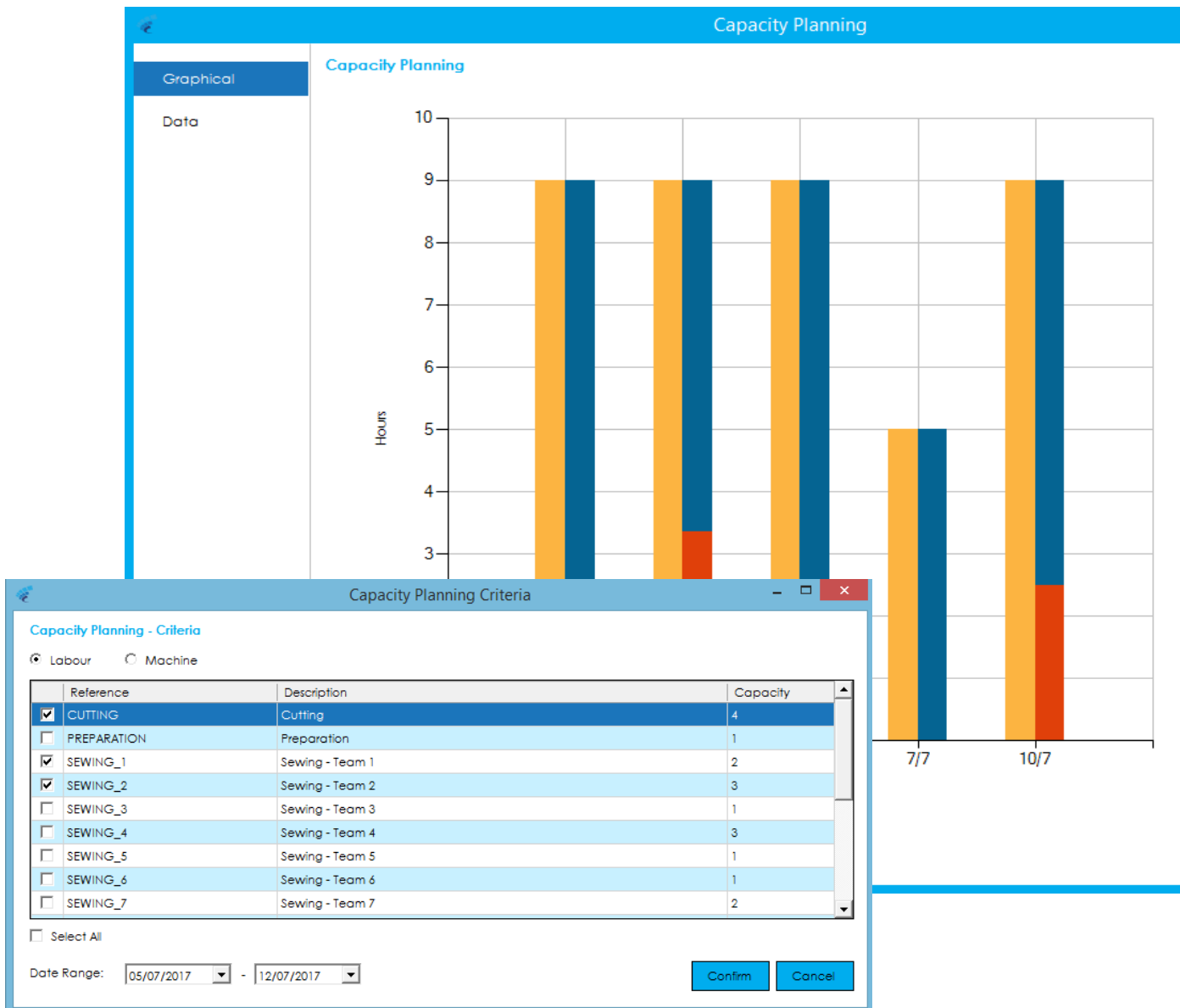
Raise orders for parent works orders or multiple sales orders with the 'Link' functionality.

## Detailed Costing History

View the current costs of your works order through the detailed costing enquiry, broken down by material, labour, overheads with an expected costs comparison.

## Rough Cut Capacity Planning

Keep an eye on your shop floor loading with this simple enquiry, detailing the hours required and used for your labour and machines. Export to excel for data manipulation.



...manage your shop floor.



# Planning

Despatch in time

...with Cim50 Planning. This module is key to controlling your stock and ensuring goods are manufactured in time to despatch to your customers.

Recommend purchase orders and works orders based on current demand held within Sage 50 and Cim50. Read from sales orders, sales forecasts, works orders and make to stock items. Or, simply ensure that your stock levels are at the reorder level set against the stock record.

Cim50 - Demo

File View Settings Tools Help

Stock Control Demand Schedule Read Linking MRP Lists Run Process View Make for stock Sales forecasts Reports

Planning Columns Filter Quick Search: Search Clear Current View: Recommendations

Quotations MRP Recommendations (Last Run: 12/07/2017 08:41)

Works Order:	Rec. Reference	Parent Tag	Stock Code	Description	Type	Demand Date	Order Date	Receipt Date	Demand Quantity	Rec. Order Qty	Supplier	Supplier Name	Lead Time	Order Reference	Action	Status
	REC000001	SO-12	MAH	Office Desk - Mahogany	Manufacture	12/07/2017	12/07/2017	13/07/2017	25.00	50.00			0		New	Awaiting Action
	REC000002	SO-4	OAK	Office Desk - Oak	Manufacture	24/07/2017	18/07/2017	21/07/2017	37.00	100.00			0		New	Awaiting Action
	REC000003	Multiple	PINE	Office Desk - Pine	Manufacture	19/07/2017	14/07/2017	18/07/2017	100.00	100.00			0		New	Awaiting Action
	REC000004	Multiple	TEAK	Office Desk - Teak	Manufacture	01/08/2017	27/07/2017	31/07/2017	100.00	100.00			0		New	Awaiting Action
	REC000005	SO-5	TEAK	Office Desk - Teak	Manufacture	08/08/2017	03/08/2017	07/08/2017	90.00	100.00			0		New	Awaiting Action
	REC000006	SO-12	DRAW/M	Drawset - Mahogany	Manufacture	12/07/2017	12/07/2017	13/07/2017	50.00	100.00			0		New	Awaiting Action
	REC000007	Multiple	DRAW/P	Drawset - Pine	Manufacture	18/07/2017	14/07/2017	17/07/2017	100.00	100.00			0		New	Awaiting Action
	REC000008	SO-5	DRAW/T	Drawset - Teak	Manufacture	07/08/2017	03/08/2017	04/08/2017	100.00	100.00			0		New	Awaiting Action
	REC000009	Multiple	LEG	Desk Leg Assembly	Manufacture	18/07/2017	12/07/2017	19/07/2017	800.00	250.00			0		New	Awaiting Action
	REC000010	Multiple	LEG	Desk Leg Assembly	Manufacture	31/07/2017	21/07/2017	28/07/2017	400.00	250.00			0		New	Awaiting Action
	REC000011	SO-5	LEG	Desk Leg Assembly	Manufacture	07/08/2017	26/07/2017	04/08/2017	400.00	400.00			0		New	Awaiting Action
	REC000012	Multiple	TOP/P	Desktop - Pine	Manufacture	18/07/2017	13/07/2017	17/07/2017	100.00	95.00			0		New	Awaiting Action
	REC000013	Multiple	AD2	Industrial Adhesive - Bulk Issue	Purchase	17/07/2017	14/07/2017	14/07/2017	0.19	25.00	1051	Superior Castings Ltd	0		New	Awaiting Action
	REC000014	Multiple	LOCKSL	Standard Lock & 2 key set	Purchase	12/07/2017	12/07/2017	17/07/2017	200.00	110.00	3052	Wedgwood Marshall & Wilson	5		New	Awaiting Action
	REC000015	SO-5	LOCKSL	Standard Lock & 2 key set	Purchase	04/08/2017	28/07/2017	03/08/2017	150.00	100.00	3052	Wedgwood Marshall & Wilson	5		New	Awaiting Action
	REC000016	SO-12	TIMB/MAH	Timber - Mahogany Veneer - 6 Mths	Purchase	12/07/2017	12/07/2017	01/08/2017	150.00	148.00	BU001	Buildex Supplies Ltd.	20		New	Awaiting Action
	REC000017	Multiple	TUBE/ST1	Steel Tube 25mm Dia	Purchase	17/07/2017	12/07/2017	14/07/2017	500.00	200.00	1051	Superior Castings Ltd	2		New	Awaiting Action
	REC000018	Multiple	TUBE/ST1	Steel Tube 25mm Dia	Purchase	28/07/2017	25/07/2017	27/07/2017	500.00	500.00	1051	Superior Castings Ltd	2		New	Awaiting Action
	REC000019	SO-5	TUBE/ST1	Steel Tube 25mm Dia	Purchase	04/08/2017	01/08/2017	03/08/2017	800.00	800.00	1051	Superior Castings Ltd	2		New	Awaiting Action

Select All Swap Clear Refresh Excel

User: M0000008



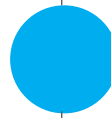
Reads demand from sales orders, sales forecasts, works orders and make to stock items.



Maintains stock levels based on reorder levels, maximum stock level and other settings within the stock record.



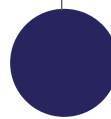
Action combined or single recommendations to raise purchase orders and works orders.



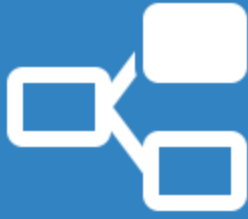
Suggests cancelling or rescheduling orders that are no longer required or can be used to satisfy other demand.



Automate both MPS and MRP at a convenient time for your business, with user specified default settings.



Easy to read output logs detailing reasons for recommendations, with historic logs.



### Jobbing or Batch

Items can be configured as either Batch or Jobbing, determining how MRP will treat demand for that item.



### Forecast

Raise sales forecasts by day, week or month, to ensure you have sufficient stock to satisfy your expected order book.

New Sales Forecast

Forecast Details

**New Sales Forecast**

Reference:

Start Date:

End Date:

Frequency:

Status:

Customer Specific:

Customer Ref:

Customer Name:

**Forecast Items**

Stock Code	Description	Item Type	Forecast Total	Unit of Measure	04/07/2017	05/07/2017
OAK	Office Desk - Oak	Finished Goods	524.00	Each	2.00	2.00
MAH	Office Desk - Mahogany	Finished Goods	1,048.00	Each	4.00	4.00

**Forecast Notes**

Demo Forecast

...take control of production.



# Quotations

Manage your sales

...with Cim50 Quotations. This module allows you to create quotations for manufactured items, configuring them from within the record itself, including non-stock items.

---

Define multiple price breaks with automatic cost calculation, raise sales, purchase and works orders from within your quote and setup repeat service and miscellaneous items.



## Setup Repeat Items

Ability to set up service and miscellaneous items on your quotes for repeat use.



## Flexible Pricing

Calculate sales prices based on cost mark-up, profit margin or on a fixed priced basis, giving you flexibility to price your quotes the way you need to.

**Quotation Settings**

Quote Settings  
Quote Analysis  
Item Analysis  
**Service Items**

Type	Description	Unit Cost	Unit Price
Installation	Install Charges	12.50000	35.00000
Training	Training Charges	12.50000	35.00000
Carriage	Carriage Charges	5.00000	10.00000
Insurance	Insurance Charges	5.00000	10.00000
Demo	Demo Charge	50.00000	99.99000
Admin Charge	Admin Charge	5.00000	10.00000

Add Edit Remove

Save

**Edit Quotation Service Item**

Quotation Service Item

Type: Admin Charge

Description: Admin Charge

Default Unit Cost: 5.00000

Default Unit Price: 10.00000

Save Close



### Raise Orders

Once a quote has been accepted, you can move onto the next step, by raising sales, purchase and works orders directly from within your quote. Or, just convert the quote to a sales order and let the Cim50 Planning module take care of the rest.

**Quotation QU000031 - Orders**

Quotation  
Quote Reference: QU000031 Customer: AD01 - ADVANCED SECURITY PROTECTION  
Quotation Date: 06/07/2017 Current Status: Entered

Order Type  
 Sales Order  Works Order(s)  Purchase Order(s)

Create New Sales Order  
Order Number: <Auto Number> Order Date: 06/07/2017 Customer PO:   
Due Date: 06/07/2017 Type:  Sales Order  Proforma Order

No.	Product Code	Description	Quantity	Unit Price	Line Value
1	1002/59/1	SIDEWINDER HOLSTER	1.0000	0.00000	0.00000

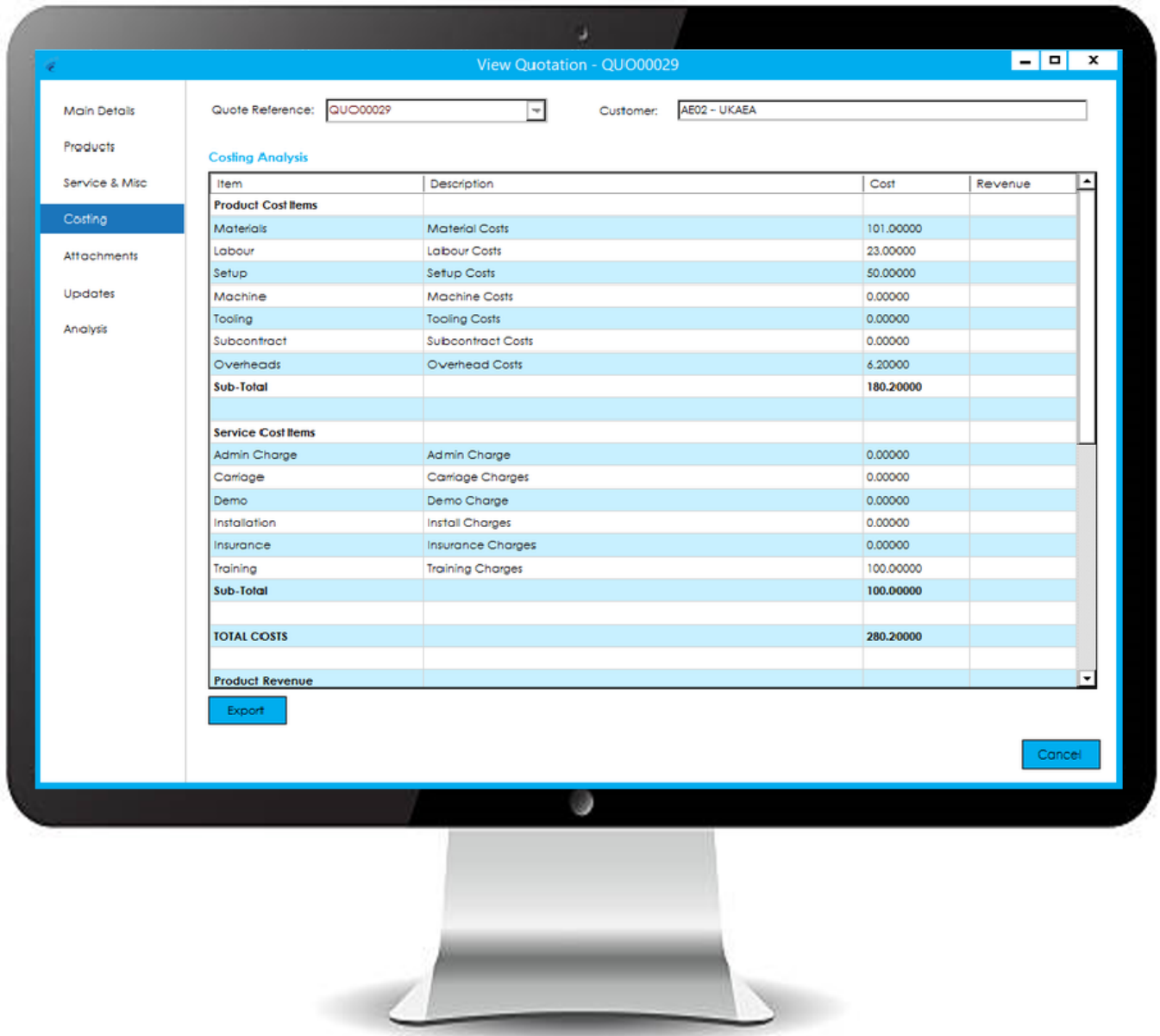
Net Discount to Apply: 0.00000 % or 0.00000

Create Cancel



## Detailed Profit and Loss Analysis

Broken down by material, labour, machine, overheads and subcontract costs. Cim50 Quotations module gives you full visibility of your costs, revenue and expected profit margin.



...raise price quote.



# Shop Floor Data Capture

Process stock movements

...with Cim50 Shop Floor Data Capture. This module allows you to process stock transactions from the convenience of a handheld tablet or workshop PC.

Utilise the power of barcode scanning to streamline your production processes, stocktaking and resource management.

## Stock Control Functionality



**Stock Transfer** – process stock location transfers.



**Quarantine** – process quarantine inspection against products, releasing to stock or rejecting for supplier return/in house re-work.



**Purchase Orders** – generate purchase orders simply by scanning items that you require in your workshop.

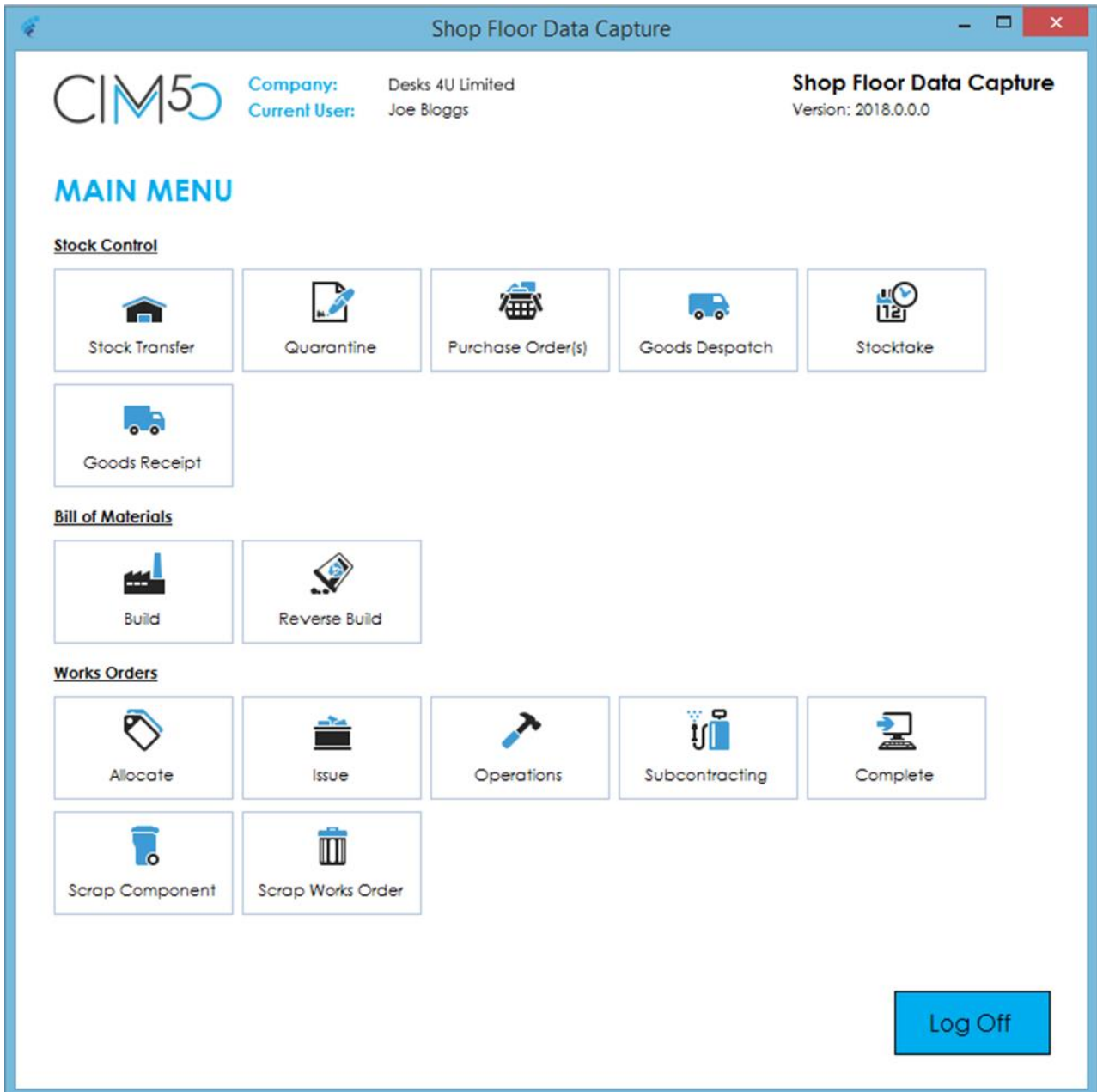


**Goods Despatch** – pick and pack items for despatch, then process and generate a delivery note.





# ...quick stock movements.



## Bill of Material Functionality



**Build** – process BOM builds, scanning out component stock and adjusting in finished items.



**Reverse Build** – process a BOM reverse build.



### Operation Times

Capture labour times for works order operations, either real time or backflush, automatically issue associated components and complete works orders on final operation.



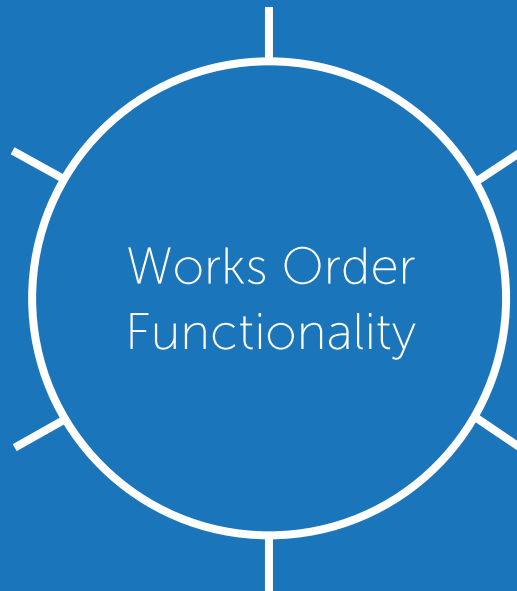
### Complete

Complete a works order, booking finished items in to stock.



### Allocate

Allocate stock to works orders by scanning component stock, batch or serial numbers.



Works Order Functionality



### Subcontracting

Despatch and/or Receive components that require subcontract processes.



### Issue

Issue stock to works orders by scanning component stock, batch or serial numbers.



### Scrap Components & Finished Goods

Scrap components and finished items, record reasons and re-issue replacement components, with options to increase existing works order quantity or create a new works order.



# Dashboards

Interrogate your data

...with Cim50 Dashboards. Collaborating with your existing modules, Dashboard takes a snapshot of your data, allowing you to access, interact and analyse up-to-date information, making smarter, data driven decisions.

Utilise the power of Dashboards to get complete visibility of your stock and production information. All dashboards are drillable and provide the option to look back at previous snapshots, to interrogate historical data at any time.

## Stock Valuation

Displays stock valuation by stock category or sell by date in the form of a pie chart.

## Aged Stock Valuation

Displays value of stock based on when it was last used.

## Best and Worst Performing Suppliers

Displays the top 10 best and worst performing suppliers in the last 12 months, based on delivery performance.

## Last Movement Dates

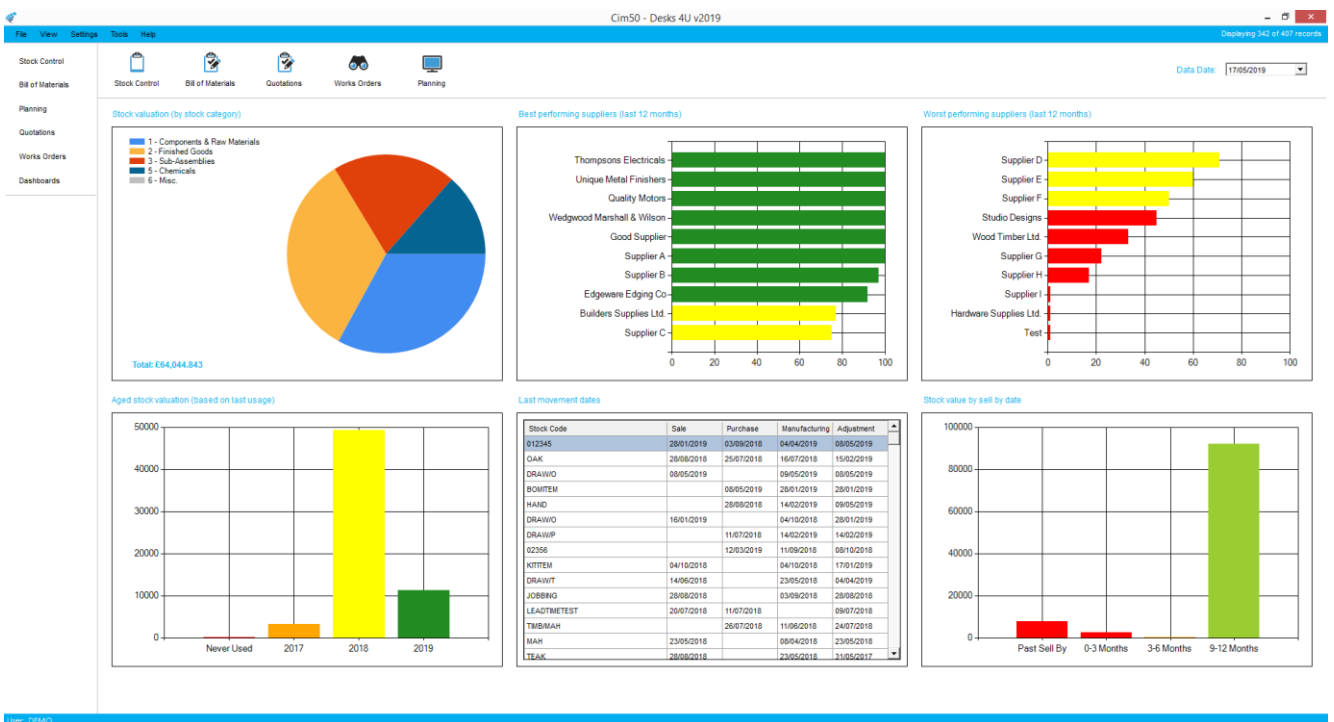
Displays last movement dates for key transaction types in Cim50, such as goods received, and goods despatched.

## Works Order Completions

Displays a graph showing the quantity completed on time, quantity completed late, and quantity scrapped per month.

## WIP Valuation Breakdown

Displays a pie chart detailing a breakdown of the WIP valuation by Material, Labour, Machine, Setup, Tooling, Subcontracting and Overheads.



## Completion Costing Variance

Displays a list of works orders completed in the last month where the actual cost was higher than the expected cost.

## Overdue Works Orders

Displays a list of overdue works orders.

## Action Quotation Profitability

Displays a list of active quotes ranked by profitability.

## Quote Conversion Statistics

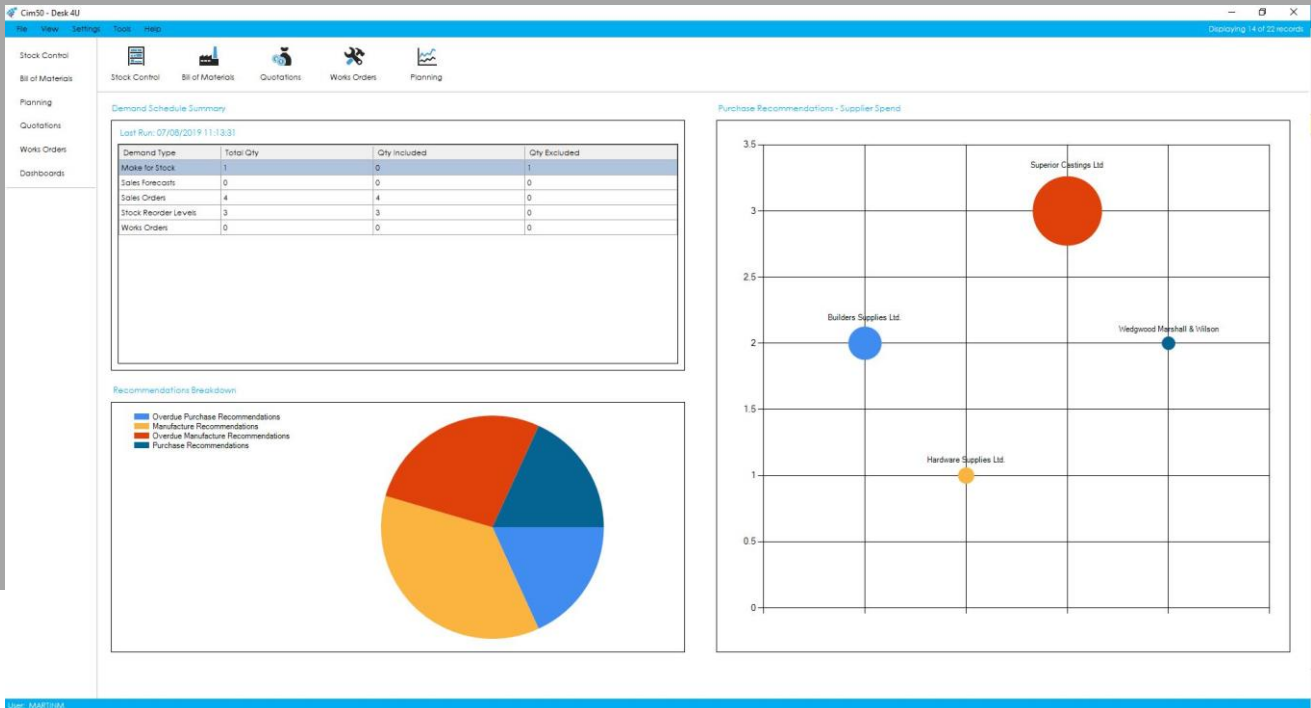
Displays a graph detailing the number of quotes raised, won, and lost each month.

## Bill of Materials - Costings

Displays a list of BOMs where the cost price or suggested selling price is higher than the standard selling price.

## Bill of Materials - Volume and Value

Displays a graph detailing build volume (quantity) and value broken down by week number.



## Planning Recommendation Statistics

Displays a pie chart showing the breakdown of purchase / manufacturing recommendations and those that are overdue.

## Demand Schedule Summary

Displays a live breakdown of the makeup of the last demand schedule run.

## Recommended Supplier Spend

Displays a bubble graph detailing the number and value of orders that are recommended to be placed with suppliers.

manufacturing  
software...

...for **sage**



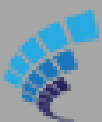
S O F T W A R E

IN PARTNERSHIP WITH



**Xperience**

If you are interested in finding out more,  
please contact us on [01733 362 120](tel:01733362120) or  
email [enquiries@xperience-group.com](mailto:enquiries@xperience-group.com).



© Cim50 by CIM Software Ltd.

Park House, Franconia Drive, Nursling Industrial Estate, Southampton, SO16 0YW.

0844 8711 669 | [enquiries@cim-services.co.uk](mailto:enquiries@cim-services.co.uk) | [www.cim-services.co.uk](http://www.cim-services.co.uk)